



INSTITUTIONAL CATALOG



كلية دبي الطبية
DUBAI MEDICAL COLLEGE



Academic year 2021-2022

Praise be to Allah who taught man what he did not know and guided His servants through knowledge to the path of piety and obedience to Him. He Himself says in the Holy Book: Only those of his servants who are endowed with knowledge truly fear Allah. (35:28). And Allah's peace and blessing be upon Prophet Muhammad who taught humanity all things good and guided it to righteousness and piety.



H. H. Shaikh Khalifa Bin Zayed Al Nahyan
President of the United Arab Emirates



H. H. General Shaikh Mohammad Bin Rashid Al Maktoum Vice President and Prime Minister of the United Arab Emirates and Ruler of Dubai



H. H. Shaikh Hamdan Bin Mohammed Al Maktoum Crown Prince of Dubai

Disclaimer: all information in this catalogue is accurate at the time of publishing this catalogue. University reserves the right to change any information without prior notice. However, all changes will be widely disseminated to all students and staff. Students and staff are responsible for adherence to the latest policies.

Table of Contents

Founder's Perspective	5
About the College	6
DMCG Vision	6
DMCG Mission.....	6
DMCG Goals	6
Programs in College.....	6
History.....	7
Milestones achieved by Dubai Medical College and Dubai Pharmacy College.....	8
Program Specifications.....	10
ACCREDITATION & LICENSURE.....	10
Organization Chart.....	11
College Campus	12
Teaching Facilities	12
Technological Resources	14
Student Support Facilities	14
DHA Facilities.....	15
Contractual Relationships for clinical training	15
LIFE ON CAMPUS (STUDENT SERVICES)	16
Student Advising Services	16
Student Counselling Services	17
Student Career Planning Services	17
Arrangements for Hospital Training.....	18
Student Union	18
Students' rights and Responsibilities	21
Code of Conduct.....	23
Admission Requirements	26
Tuition fee	29
Refund Policy of Tuition Fees	29
Mode of payment:.....	30
Academic and Assessment Policies of MBCh	31

1) PROGRAM LEARNING OUTCOMES.....	31
2) TEACHING PLAN (DRAFT).....	32
3) ACADEMIC CALENDAR.....	42
4) COURSE DESCRIPTION.....	42
5) GRADING SCHEME.....	42
6) ACADEMIC PROGRESS.....	42
7) FACULTY FOR MBBCH.....	42

Founder's Perspective

During the early 1980s, it became clear to me that our rising society deserves more than what it had achieved then. Many alternative ideas on how to make my society happier and more prosperous were shuffling in my mind until Allah "Subhanahu Wa Taala" guided me into the very much needed health care education, especially among the women part of our society. The hard work started, and expertise were recruited from other countries who would be able to help with ideas, expertise, knowledge and above all be able to work in harmony with our beautiful and civilized culture. The blessing of Allah came clear in 1986 with the establishment of Dubai Medical College for Girls (DMCG): the first medical college for girls in the UAE. The candidate girls were carefully picked from among the best in the UAE and the Gulf and were given the great opportunity of learning and studying medical sciences as taught by international experts from different parts of the world. The graduates blossomed everywhere they worked and proved their excellent knowledge, skills and attitudes in international post-graduate exams.

This success encouraged me to further expand the fruitful experience into the establishment of Dubai Pharmacy College for Girls (DPC) in 1991. The success story has been repeated and now the twin colleges are collaborating and enforcing the efforts of each other. The graduates are blossoming all over the UAE, the Gulf, and the rest of the world.

Late Haj Saeed Ahmed Al Lootah

About the College

DMCG Vision

"To serve the healthcare community by nurturing competent healthcare professionals while promoting a learning environment that fosters innovation, leadership, continued professional development and quality assurance, making DMC one of the leading medical schools in the world."

DMCG Mission

"DMC is committed to providing accredited health professions education at undergraduate and graduate level to students by providing a learning environment that fosters Islamic values and promotes high levels of student achievement, consistent with the highest standards of academic excellence in order serve the profession, scientific community and public."

DMCG Goals

Goal #1: Enhance Student Experience and Inspiring Culture of Success

Ensure that students are provided an atmosphere which inspires students to be global citizens and enhance their social and entrepreneurial skills in keeping with Islamic values

Goal #2: Be a Driver of Knowledge Economy

Ensure that programs follow best practices and internationally accredited curriculum and assessment that emphasize on continuum of intellectual growth and personal development which will enable them to make a positive contribution to society.

Goal #3: Prioritize Research and Innovation

To be a center for quality research, in clinical practice, biomedical, pharmaceutical sciences & life sciences and healthcare education & management. The research is driven by what could benefit mankind nationally and internationally and will target real life health and social problems that need evidence-based solutions.

Goal #4: Develop Human Capital

Develop and sustain well-qualified faculty with high level of commitment for excellence in health professions education. Attract good quality national and expatriates to enroll and create a unique and excellent brand name identity

Goal #5: Commitment for Need Based Service to Community

Become an educational, economic and cultural partner that contributes to the human and social capital needs of the region and beyond.

Goal #6: Enhance External Relationship and Engagement

To work with partners to create a world-class regional innovation ecosystem to build a stronger and more constructive relationship with our local and regional community

Programs in College

- MBBCh

History

Founder Late **Haj Saeed Ahmed Al Lootah** is famous for his diverse and successful philanthropic ventures, non-profit educational institutions, entrepreneurship, veracity as well as its profound dedication to corporate citizenship and sustainable development. His success spans across key business sectors from construction, real estate and energy conservation to financial services, applied research, ICT, education, hospitality, media and healthcare.

With the enduring values of education, cooperation and economy which set the foundations of his work, Dubai Medical College was established in 1986 as the first private medical college for girls in the region. The mission of the founder, Haj Saeed Lootah was to set up the medical college for girls in the UAE as there was a need for developing lady doctors.

As a continuation of his vision for educational services, Dubai Pharmacy College (awarding B.Pharm) was established 1992. The founding mission was again rooted to the needs of the national and international needs for pharmaceutical professionals.

The mission statements of both colleges were to make medical and pharmaceutical education locally accessible and to help develop the country by contributing skilled women physicians and pharmacists. In 2013 Dubai Pharmacy College for Girls (DPC) broadened its educational programs by starting Master's program. DPC got initial accreditation from the *Ministry of Higher Education and Scientific Research*, UAE for master's Program with two specializations:

- Clinical Pharmacy
- Pharmaceutical Product Development

In 2019, Haj Saeed's vision to expand undergraduate and post graduate program at the colleges led to unification of the two colleges into a university, named Dubai Medical University.

Dubai Medical University is proud to promote Sheikh Mohammed bin Rashid Al Maktoum's vision for healthcare.

"Naturally, health is the most valuable thing one can possess; without good health, a person suffers, as does his family and, ultimately, the economy. Therefore, the growth and development of any successful economy depends heavily on the health of its citizens."

His Highness Sheikh Mohammed bin Rashid Al Maktoum

Milestones achieved by Dubai Medical College and Dubai Pharmacy College

1986 The first DMCG students begin classes.

1987 H.H. Sheikh Hamdan bin Rashid Al Maktoum, Deputy Ruler of Dubai and Minister of Finance and Industry, Government of UAE, formally inaugurates the College.

1989 DMCG signs two agreements of scientific co-operation one with the University of Leicester, United Kingdom and one with the Cairo University of Egypt.

1991 Sheikh Mohammed bin Rashid Al-Maktoum, Crown Prince of Dubai & UAE Minister of Defence, graces the first DMCG graduation ceremony.

1992 The first batch of 27 students was enrolled to the Degree of Bachelor of Pharmacy (BPharm) program in Dubai Pharmacy College.

1992 An evaluation team from Michigan State University, U.S.A., is sent to assess DMCG by the Ministry of Higher Education and Scientific Research of UAE. The team approves of DMCG and recommends that the College be granted accreditation.

1994 The Ministry of Higher Education and Scientific Research of UAE grants licensure to DMCG's Degree of Bachelor of Medicine and Bachelor of Surgery (M.B.B. Ch).

1995 The General Medical Council of Great Britain grants recognition to the MBBS degree awarded by DMCG.

In 1995, a tie-up with the DPC with Dubai Hospitals Authority (DHA) and Global Pharma gave DPC students the opportunity to participate in educational internship programs.

1996 DMCG receives accreditation by the Ministry for Higher Education and Scientific Research with the recommendation of Michigan State University's evaluating team. This accreditation represents worldwide recognition.

In **1998**, the bachelor's received full accreditation from the Commission of Academic Accreditation (CAA), Ministry of Higher Education and Scientific Research (MoHSR), UAE. This recognition represents worldwide recognition.

2000 The World Health Organization lists DMCG in the March 2000 (7th) edition of the World Directory of Medical Schools as a recognized and accredited medical school.

2004 A Memorandum of Understanding is signed between the DHA and DMCG for the integration of DMCG.

- 2004** The Sheikh Hamdan Award for distinguished contribution to medical science is awarded to Haj Saeed Bin Ahmed Al Lootah, for founding Dubai Medical College.
- In 2004, First educational institution to be awarded the Dubai Quality Appreciation Program (DQAP), is awarded to Dubai Pharmacy College, a testament to the College's excellence.
- 2005** First Medical Education Symposium is conducted by DMCG.
- 2006** DMCG wins the Dubai Quality Appreciation Program (DQAP).
- 2008** DMCG signs agreement with AIIMS, New Delhi for summer training program
- 2008: DPC signs MoU with SEHA - **Abu Dhabi Health Services** for clinical pharmacy hands on experience.
- 2009** DMCG makes UAE the first country to join the FAIMER network
- 2010** DMCG wins the DEWA award
- 2011** Silver jubilee celebrations are graced by H.H. Sheikh Mohammed bin Rashid Al-Maktoum, Vice President of UAE and Ruler of Dubai
- 2011** DMCG wins World Education Asia award
- 2011** Haj Saeed Bin Ahmed Al Lootah wins 'Head of State Merit Award' from H.H. Shaikh Khalifa Bin Zayed Al Nahyan, President of the UAE on 40th National Day of UAE, for his role played in building the nation.
- 2011** DMCG participates in the WHO EMRO regional consultation for framing regional standards for medical education
- 2011** Dubai Medical College Wins World Education Congress Asia award - Best Educational Institute in Healthcare
- 2012** DMCG wins the Dubai Quality Award (DQA) in recognition of its drive for excellence and it's the first Higher Education Institute to be awarded for its quality standards.
- 2012** Mohammed Bin Rashid Al Maktoum Business Award 2011 (MRM) - Best Performance in Service Category.
- In **2013** was a proud moment in the history of the DPC as they got initial accreditation from the CAA, for the Master of Pharmacy programs with two specializations in, Clinical Pharmacy and Pharmacy Practice, Pharmaceutical Product Development
- In 2014, DPC was honored the GCC Pharma Outstanding Education Award in the GCC Pharmaceutical Congress to be among the top 5 institutions in pharmacy education.
- 2016** Haj Saeed Bin Ahmed Al Lootah wins as 'the Educational Personality of the Year' from Khalifa Award for Education.
- 2019** Initial Accreditation of MSc Addiction Science program obtains initial accreditation by Commission of Academic Accreditation, Ministry of Education. UAE.

Program Specifications

Courses offered	M. B. B. Ch.
Degree Title	Bachelor of Medicine and Surgery
Type and Minimum Duration	Full-time, 5 years program + 1 year internship
Academic year	Late-August to Mid-July

ACCREDITATION & LICENSURE

Licensure of Dubai Medical College

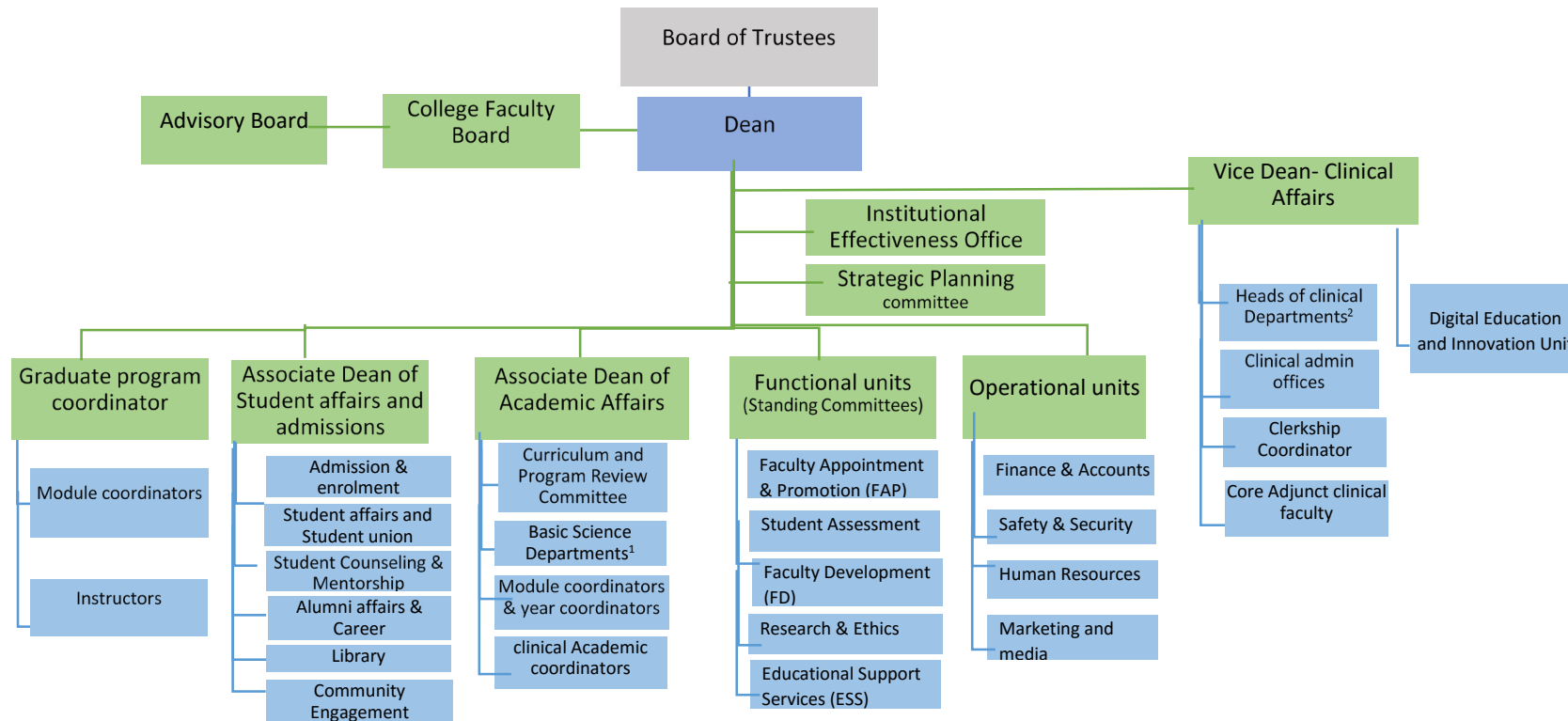
“Dubai Medical College, located in the Emirate of Dubai, is officially licensed from 27th April 2015 to 31st Dec 2018 by the Ministry of Higher Education and Scientific Research of the United Arab Emirates to award degrees/qualifications in higher education.”

Accreditation of MBBCh program

MBBCh program of DMCG has been accredited since 1991 by Ministry of Higher Education of UAE. The program has been regularly re-accredited by the Commission of Academic Accreditation, Ministry of Education. UAE.

Organization Chart

Organization Chart for DMC (6/5/2021)



Heads of Basic Sciences Departments¹	<ul style="list-style-type: none"> Anatomy & Histology, Biochemistry, Physiology, Pathology, Microbiology & Parasitology, Pharmacology, Community Medicine
Heads of Clinical Sciences Departments²	<ul style="list-style-type: none"> Obstetrics & Gynecology, Paediatrics, Primary Health care, Internal Medicine, Surgery

Teaching Facilities

The following facilities are available at the College:

Lecture Halls

There are 10 lecture halls all of which are duly equipped with state-of-the-art audio-visual aids and wireless network access.

Laboratories

We have following state-of-the-art laboratories for our students.

a. Biochemistry Laboratory:

This facility is equipped with:

- Equipment for training on laboratory diagnostics such as balances, centrifuge machines, ovens, water baths, a pH meter, a thermal cycler, an electrophoresis, a UV camera, spectrophotometers and so forth.
- Reagents, chemicals, glassware and pipettes necessary for biochemical and molecular tests and experiments.

b. Histopathology Laboratory:

This facility is equipped with par-focal, illuminated, binocular microscopes for each student, binocular teaching microscopes and explanatory slides on various body systems for the study of diseases. Microtome has also been made available for the preparation of slides.

c. College Museum:

This facility is equipped with gross specimens of different organs.

d. Anatomy laboratory

This facility is equipped with cadavers preserved in formalin in addition to plastinated organs, plastinated sections, plastic models, human bones, skeletons, X-rays, CT scans & MRI's and interactive audiovisual aids.

e. Histology Laboratory

This is another laboratory which is equipped with par-focal, illuminated, binocular microscopes for each student, accompanied by explanatory slide packages.

f. Physiology Laboratory:

This facility is equipped with state-of-the-art teaching facilities like Power Lab software, a Bio Pack System, ECG apparatus, Stethoscopes, Haemocytometer, Respirometer, Sphygmomanometer, Oscillograph, Westergreen tubes, Korr system, cardiac monitor, Life form with speaker, Coagulometer, Snellen chart, Treadmills, Ishihara chart and Kymographs.

g. Pharmacology Laboratory

This facility is equipped with power lab and PCCAL companion software. The lab is also equipped with an electrical pressure calibrator, a dbl tissue bath set, a mammalian heart perfusion isolator and hot plates.

h. Microbiology and Parasitology Laboratory

This facility is equipped with sterilization devices, incubators, ovens, centrifuges, microbe culturing plates, culturing media, light microscopes, explanatory slides and videos for practical sessions.

i. Molecular Biology Laboratory

This facility is well equipped to conduct tests like PCR, ELISA, and Western Blot.

j. Pharmaceutics laboratory

k. Pharmaceutical Analysis and Natural Products Laboratory

l. Pharmaceutical Chemistry-1 Laboratory

m. Cell Culture Laboratory

n. Pharmaceutical Chemistry-2 Laboratory

o. Pharmacy practice Laboratory

Library

The preclinical library is equipped with a reasonable collection of medical textbooks, journals, periodicals and internationally peer-reviewed literature. Wireless access and computerized literature search facilities are also provided. An attached study room is available for students wishing to study on campus.

The learning and assessment center

This center is equipped with 80 computers and projection facilities, where computerized examinations are conducted. This center is also the venue for conducting elective project presentations, interactive learning and clinical skills training.

DRUG INFORMATION CENTER (DIC)

The Drug Information Center has been established along with Model Pharmacy in the College to acquaint the students with the role of DIC for answering questions of health care team and also to acquaint them with the needs required to initiate self-community pharmacy or hospital pharmacy DIC. It also provides information to students on pharmaceutical or medical topics which help them to write projects, essays, review articles for seminars and research.

The DIC of the College has thirty-three computers, internet, primary literature, CD-ROMS and also reference books like USPDI, Martindale, PDR and Internal Medicine, and BNF.

Technological Resources

The college provides the students with the LMS (Learning management system) to facilitate learning. The LMS is a software application for the administration, documentation, tracking, reporting and delivery of electronic educational (also called e-learning) courses materials or other training programs. You will be provided with a unique username and password which will allow you to login to the system. On the system you can do the following:

1. You can read the news of your university, college or new specific update for a certain course
2. You can read course material and download it
3. You can respond to assignments or quizzes and upload your response
4. You can see your total grade or grades of specific exam
5. You can raise your voice and speak your opinion or exchange comments on discussion forum General or specific to each course
6. You will sit for mid semester, semester or final exam on the system
7. You may be requested to complete surveys on the system
8. You can see on the calendar all important events in your college and deadlines of different activities.
9. Your instructor may build a survey to take your opinion and record it on the system.
10. You can keep some of your files, notes in a special locker which can be seen by you only to use it later on.

You can also send email to instructor and paste your photo in your profile and much more.

When you need to know how to maximize the use of LMS you can go to the section of “@D2I friend of students” to find material, video, documents and tutorials on how to use our LMS.

Student Support Facilities

1. MOSQUES

The College has mosques inside its campus for faculty, staff and female students which sustains the Islamic atmosphere in the College.

2. Transportation

Daily transportation facilities are available for close destinations. Every weekend (Thursday) buses take students staying at the hostel back to their homes in Abu Dhabi, Fujairah, Ras Al Khaimah and Al Ain and bring them back to the College on the next working day.

3. Student Lounge

A plush resting area located around the round hall allows students to rest and relax during their intervals.

4. Other services

The College provides a study room, mosque, a mini-mart and a dining hall.

5. Hostel Facilities

Hostel facilities include boarding rooms, study rooms, a restaurant and a mosque. The cozy single and double boarding rooms are furnished with all basic amenities. The hostel facility is provided to all external and UAE candidates, except those belonging to Dubai, Sharjah, and Ajman. All relevant information for those interested in boarding is included in the application form.

6. Recreational Facilities

It is our desire to help students develop coordination and self-confidence. Our international fitness centre is located beside the campus of DMCG and offers recreational services at a reduced rate.

Amenities include a gymnasium; equipped with various exercise machines, table tennis, and a swimming pool. Professional instructors are also available for personal training.

DHA Facilities

Comprehensive, advanced and up-to-date teaching facilities are provided for our students by the Dubai Health authority (DHA). They include wards for patients, clinics, health centers, operation theatres, laboratories, and diagnostic facilities (such as X-ray, CT-Scans, Nuclear Medicine).

There are three lecture theatres available at the Dubai Health Authority: one at Dubai Hospital and one at Latifa Hospital, each with a seating capacity of 100 people, and another at the Rashid Hospital campus with a seating capacity of 500. All three theatres are fully equipped.

The DHA has an extensive library service which is divided into:

- A) The main library which is in the same building as the clinical faculty on the Rashid hospital campus
- B) Satellite libraries at all the hospitals and clinics belonging to the DHA

Contractual Relationships for clinical training

From the first batch of DMCG onwards the clinical training has been in the DHA hospitals. The members of Dubai Medical College and Dubai Health Authority form the Executive Board which runs the educational activities. Based on an agreement between Dubai Medical College and Dubai Health Authority, basic sciences are taught in the Muhaisnah campus, and the clinical clerkship is conducted in the DHA hospitals.

An MOU was signed between DMCG and DHCC KHMSC for student training in the Simulation Lab. The training session's faculty members were completed.

Student Advising Services

6-8 students are allotted per faculty member for academic advising. The faculty member serves to establish good rapport with students. A rota is prepared by the student counselling Unit for spending break time and office hours with the students. In addition, the faculty member arranges regular meetings and prepares report which is submitted to the Associate dean of student affairs.

All fulltime faculty members may be mentors in case of the preclinical phase. The team being mentored by the particular faculty member hold regular meetings. These groups are envisaged to be focus groups for obtaining student perception regarding key processes in the college.

► Topics of discussion:

- Psychological support & counseling
- Personal or academic or health matters.
- Grievances of students.
- Stress Management.
- Attendance- absences and excuses.
- Performance in exams and class assessments.
- Seminar preparation.

The report about all the members of the team is prepared by the mentor and submitted to the Dean every semester. If it is seen that there is a sudden deterioration in the performance of a student, a special report is requested from the mentor concerned. This report is placed before the Faculty Board for implementation of suggested corrective action. Intimation to the parents and psychological advice may be recommended.

Advisee Role and Responsibilities

Students carry out portion of responsibility in the advising process. In the interest of successfully completing degree program, the student must be proactive in finding the necessary resources needed for attaining the degree. In order to contribute to an effective advising relationship, students are expected to:

1. Attend advising sessions. Advising sessions may be conducted via email, telephone or one on one, depending on the faculty advisor.
2. Clarify personal values, abilities, interests and goals.
3. Become knowledgeable of all graduation requirements and adhere to institutional policies, procedures, and deadlines.

4. Prepare for each advising session and follow through on actions identified during each advising session.
5. Become familiar with and successfully utilize campus resources.

Student Counselling Services

If a student requires counseling regarding personal, social or psychological problems, she is referred to a student counsellor, who is appointed on a part-time basis. The counsellor provides mental health and personal counseling. The counsellor is a qualified psychology graduate with at least 2 years of prior experience in counseling students in a professional course.

The counsellor will be available in the college three days per week. The students may be referred to the counsellor, by their advisors or they may drop by the office to discuss their issues. The counsellor provides a report on her activities every semester. In case of urgent referrals, the students may be sent to the Rashid Hospital Psychiatry department for management.

Student Career Planning Services

Career Planning Committee will be performed, under the name of Career Guidance Cell which is formed by staff members and student representatives in addition to External Guide.

Objectives:

- a. Awareness of opportunities
- b. Prepare for it.
- c. Market the college
- d. Link with other universities
- e. Counselling for postgraduate studies.

Career Planning lectures are conducted during the internship year where students are encouraged to determine their overall goals and objectives and to develop a strategy and define the specific means to implement the strategy actively. In addition, students are reminded continuously to update their portfolios as well as pursue other equivalent licensing exams at the time of their medical school finals.

Student Complaint policy

The college aims to provide a supportive environment for students and to be responsive to student concerns when they are raised. It is recognized that in any organization, problems may arise of a teaching-related or service-related nature. Those problems need to be addressed to ensure that normal high standards are maintained. Dealing with small problems or areas of concern as they arise will often prevent them becoming larger problems which are harder to resolve. Students are encouraged therefore, to raise any issues of dissatisfaction, at an early stage, so that they can be dealt with effectively. The college ensures to take seriously all issues that are raised and to deal with them through processes that are timely, fair, consistent and easy to follow.

Arrangements for Hospital Training

Security arrangements

As security arrangement for hospitals, students are provided entry badges to enter all hospitals and primary health centers.

Rashid Library

Students are provided username and passwords to access all the literature in Rashid Library by internet.

Vaccination services

Students are provided vaccination services at entry level to the hospital from the Dubai Specialized center.

Infection control training (or health education)

Safety precautions and infection control is provided among other introductory lecture series topics during the first 6 weeks of the clinical year. Patient safety is provided by an expert according to WHO guidelines. Other related topics which are covered are medical ethics, health informatics, Epidemiology and communication skills. Infection control is also covered by an infection control person during the same period of time as well as during infectious disease topic lecture series.

Student Union

1. DMCG student Union is composed of the President and vice-president of the Union, General Secretary, Assistant General Secretary, and the Secretaries of the Union Committees of the Dubai Medical College, elected through a free and secret vote by the students.

The Union shall be composed of the following:

- a. Union President.
 - b. Union Vice-President.
 - c. Union General Secretary.
 - d. Union Assistant General Secretary.
 - e. Events Coordinator
 - f. Secretaries of the Union Committees. Union Committees are: (i) Educational Trips Committee, (ii) Religious and (iii) Scientific Committee, and (iii) Arts and Media Committee. Each Committee shall have a head to be elected to the position by the students the Dubai Medical College.
2. The Union shall meet at least six times in a year on the invitation of the Union President, in coordination with the Union General Secretary, or on the request of two thirds of its members.
 3. It shall discuss the items on the agenda of the meeting and issue its recommendations and resolutions.
 4. It shall monitor the implementation of its earlier resolutions, in each meeting.

5. It shall decide about the allocation of funds about the activities of the Union and send its recommendations to the Management of the two Colleges for necessary Provision.
6. Student Union shall provide semester wise reports and suggestions regarding curriculum, extracurricular needs and infrastructure.

Function of student union committee

1. Providing management inputs to the college

- a. Provide inputs for review of the strategic plan of the college.
- b. Feedback regarding review of mission and vision of the college.
- c. Provide feedback of the students regarding areas of improvement.

2. Coordination of student activities

This is coordinated by the Events coordinator

- a. To propose trips, functions and special occasions the students want to undertake or hold.
- b. To coordinate and organize the introduction meets on the commencement of the New Year for the new students in the College.
- c. To organize educational and recreational trips on an average of at least one in each term outside the Emirate of Dubai, and one in each term inside Dubai.
- d. To organize the graduation ceremony in cooperation with the graduates.
- e. To arrange the end-of-the year function.

3. Conduct student activities

It is the responsibility of the religious, scientific and Arts & media committees to propose and organize student activities relevant to each.

- a) To propose and hold religious, educational and cultural contests in coordination with the students at the Dubai Medical College.
- b) To prepare religious, cultural and educational wall newspapers.
- c) To propose and organize Islamic, educational and cultural talks.
- d) To organize art competitions on subjects decided by the Union.
- e) To publish informative hand-outs for creating consciousness about healthcare and the safety of environment.
- f) To contribute to wall newspapers and cultural magazines highlighting information and news about the College.
- g) To highlight information about the College activities through various newspapers, magazines and other means of mass communication.

Student Union Elections

1. The College Administration shall issue a notification for the constitution of an Election Committee for the Students Union within a maximum of two weeks' time from the start of studies.

2. The Committee shall organize free and secret elections for choosing the Union and all its office-bearers, namely (i) The President, (ii) The Vice-President, (iii) The General Secretary, (iv) The Assistant General Secretary (v) Secretary for each one of the Union Committees.
3. Each student enrolled in the College shall be entitled to contest for any one of the offices of the Union.
4. Counting of votes and the invalid votes shall be rejected.
5. Election results shall be announced by the Election Committee on the same day.
6. A candidate may be elected to any office unopposed.
7. The term of office for the Union of both – The Dubai Pharmacy College and the Dubai Medical College for Girls shall be one academic year.

For more details on Tasks and Functions of the Members of Students' Union in the Student Union Manual Events organized by Student Union

All events organized by the Student Union are bound by the following regulations

- Detailed proposal of the event should be discussed in student union meeting
- Approved by the student union president
- Approved by the Dean
- Copies to be send to:
 - o Program Delivery Committee
 - o Events coordinator of DMCG (Ms. Sumaiya)
 - o Student Affairs
 - o Cafeteria
- Reports should be submitted to the administration immediately after the event.
- Events should follow events calendar / academic calendar
- For Outdoor activities staff invitations should be 3 days before the activity
- Students should follow the rules of the college & college dress code in all indoor & outdoor activities
- Student union will be responsible for breaking the above regulations

Regulations related to Student publications:

All publications from the students are expected to be part of activities of the Student Union. Any student who wants to publish or initiate a media activity, she has to take explicit permission from the Executive Deans' Council and or chancellor. Publications under the scope of this regulation may be newsletters, e- newsletters, journals, magazines, notice board publications and other external and internal media communications.

Publications by the Student Union

Any publication in the media prepared and run by the student union are bound by the following regulations.

- Proposal should be discussed in student union meeting.
- Contents should include Input coming from all members.
- Proposal should be approved by the student union president
- Proposal should be approved by the Executive Deans Council and Chancellor.
- Proposal & content will be reviewed by the students' affairs prior to publication

Students' rights and Responsibilities

All students enrolled at DMCG have a right to student-centred education, research and services in an environment free from threat, harassment and discrimination. They are responsible for ensuring that the institutional culture and their individual behaviour reflect the college values and regulations. Students are expected to positively contribute to the institution by maintaining high standards of integrity and academic honesty.

Rights:

All Students enrolled at Dubai Medical College shall have the following rights:

1. Obtaining medical education and benefit by the advanced educational programs in a conducive educational environment.
 - i. Attending theoretical and practical lessons and, while doing so, participating in purposeful academic and educational discussions, in a manner directed by the faculty member.
 - ii. Participation in the student activities through the student union.
 - iii. Benefiting from the services offered by the College, such as the library, the hostel, and the transportation, etc.
 - iv. Receiving the identity card issued annually by the College as a proof of her being a student of the College.
 - v. Appearing in the exams and being subjected to evaluation in accordance with the College rules and regulations.
2. Students are entitled to respect in an educational environment which is free from threat, harassment, abuse or discrimination.
3. They are entitled to a clean, safe and adequate workplace.
4. Healthcare is provided in case of emergency, first aid and infection control. The College shall, however, not bear the expenses of all the treatment, except for transport from and to the place of treatment inside the city of Dubai.
5. Social care in the form of student counselling and mentorship is provided by the College.
6. Procuring residence visa necessary for non-nationals on the sponsorship of the College, as per the rules enforce, provided the visa fees shall be paid by the student.
7. Obtaining the following certificates/ testimonials:
 - a. Annual certification of her being on the rolls of the College.

- b. Testimonial mentioning the academic level achieved by the student as per the format in use.
- c. Certificate of the tuition fees payable by her.
- d. Certificate of good conduct. This shall only be given to students who have not been penalized for acts violating integrity and honor.
- e. Graduation certificate (degree) on completion of all the requirements of graduation on the prescribed specimen and according to the rules and regulations in force.
- f. No-demand certificate from the College.

All the above-mentioned certificates shall be issued in accordance with specimens and rules and regulations in vogue in the College and based on real facts about the student. First copy of all these certificates shall be issued free of cost, while other copies shall be issued against payment of charges to be fixed by the College. Stamped Photostat copies shall, however, be free of cost.

Students' Responsibilities:

A student is obligated to abide by the following:

1. To work for the accomplishment of the objectives of the College.
2. To ensure that her behaviour reflects the college values.
3. To strive for achieving the highest level of academic and professional knowledge, skills and attitudes.
4. To abide by the rules and regulations of the College.
5. To ensure that their actions are in accordance with general & Islamic guidelines, academic honesty guidelines and dress code.
6. To make positive contribution for improving the performance of the College and its development by offering written suggestions and opinions to the College.
7. To report any misconduct among themselves and to uphold the reputation of the college.
8. To ensure careful use of equipment in the college and to ensure that there is no violation of college property. Any theft or willful destruction of the property of the college would be unacceptable and serious action would be taken against the person committing it.

Student Pledge:

All students resolve to abide by the following pledge on the first day of college.

"I pledge to Allah and myself, to honour and uphold the values of DMCG:

I will perform all duties under the conviction that Allah is overseeing all our actions

I will work hard for the pursuit of knowledge without expecting worldly gains

I will respect those who teach me and in turn pass my knowledge on to my juniors

I will maintain modesty, humility, patience, sincerity and integrity in all my actions I will respect the value of time and maintain punctuality

I will continuously seek to improve myself spiritually and professionally

I will execute all actions for the well-being of my patients, regardless of their religion, position or association

I will respect all patients' privacy at all times

I will behave as a sister to all my colleagues

I will continuously seek to become all that Allah wants me to be"

Code of Conduct

General guidelines

As part of their Islamic Identity the students as well as lady doctors are expected to adhere to and demonstrate the following code of behaviour:

1. Keenness to perform acts of worship at proper intervals preferably as a congregation.
2. Pursuit of knowledge and fruitful work, without waiting for thanks from others, under the firm belief that Allah alone grants, gives reckons and rewards.
3. Adhering to Islamic dress and avoiding ostentation.
4. Doing one's duty under the conviction that Allah is overseeing all our actions.
5. Realizing the value of time and observing punctuality in attending classes, laboratories, etc.
6. Exercising extreme devotion and patience in studies as well as in work.
7. Being honest to oneself as well as to others.
8. Making positive contribution to academic discussions and extending cooperation to colleagues in all situations and circumstances.
9. Maintaining tidiness of place and encouraging others to practice it.
10. Respect the dignity of others.
11. Practicing soul-searching in all of one's doings and at all times with a view to correcting the mistakes, if necessary.
12. Observing humility and avoiding false pride.

Specific guidelines for clinical setting

The medical profession is a noble one where a doctor is expected to treat a suffering patient. It requires a great amount of dedication and sacrifice on the part of the person who aspires to accept this career.

The students of DMCG need to understand that during the course of study, due to the inherent nature of the field of health care, students may have to change some practices for the sake of the patients.

1. All students are expected to show integrity of character, honesty and dedication to their profession in all actions and words.
2. Their dress and conduct should be formal and reflect professionalism during their contact with

patients in order to gain respect from patients and society.

3. Though students are strongly advised to follow the Islamic dress code, face covering is not permissible in hospital premises, such as wards and operating theatres, where students and doctors come in contact with patients. The rights of the patients, among others, include identification of the doctor or medical student, who wishes to communicate with them. The use of facial expressions of compassion, care and confidence will help to build trust in the patients being cared for. It constitutes an essential part of the communication skill (as part of the non-verbal aspect of communication) that is employed in gaining information from patients and in imparting advice and instructions to them.
4. Students must understand that the patient is central to the medical profession and his rights must always be upheld. In particular, permission needs to be obtained from a patient every time that there is a student / patient encounter and this needs to be carried out in a specified manner. The student should state her name, her position, the reason for seeking information or examining the patient and must wait to obtain the permission before she proceeds with the examination. Should the patient refuse to give permission for any reason, then the student must accept the decision and not proceed any further.
5. All students have to learn about diagnosis and management of both male and female patients during their education and internship. Medical care cannot be restricted to female patients during the period of study, and it may necessitate students to examine male patients as part of their clinical examination and treatment.
6. The students may sometimes have to expose their hands or forearms as part of the sterilization process required for performing procedures under sterile precautions.
7. The students are expected to keep all information that she may have access to during professional contact with the patient, confidential.
8. The students have to be prepared to abide by the rules of the hospitals and cooperate with the faculty and other staff in upholding the reputation of the institution.

Academic Honesty Guidelines

Students attending Dubai Medical College are awarded academic degrees in recognition of successful completion of course work in the study of medicine. Each individual is expected to earn her degree on the basis of personal effort. Consequently, any form of cheating on examinations or plagiarism on assigned papers constitutes unacceptable deceit and dishonesty. Disruption of the classroom or teaching environment is also unacceptable. This cannot be tolerated in the college community and will be punishable, according to the seriousness of the offense, in conformity with established rules and procedures.

1. Plagiarism - Plagiarism is defined as "literary theft" and consists of the unattributed quotation of the exact words of a published text, or the unattributed borrowing of original ideas by paraphrase from a published text. Plagiarism also consists of passing off as one's own, segments or the total of another person's work.
2. Cheating - Cheating is defined as: the unauthorized granting or receiving of aid during the prescribed period of a graded exercise.
3. Disruption of Academic Process - Disruption of the academic process is defined as the act or words of a student or students in a classroom or teaching environment, which in the reasonable estimation of a faculty member, disturbs the smooth proceedings of the course.

Computer use guidelines

The computing facilities in the various colleges are a vital component of the academic environment. Each person using these computers must be considerate of other users. The purpose of these facilities is the support of teaching and research by its authorized users.

Activities that damage or impede the work of other users are of particular concern. Such activities are discourteous and illegal.

The U.A.E has laws which hold that unauthorized use (including accessing another user's account) leading to offenses against intellectual property and/or computer users, is a felony. Besides civil penalties the college and/or university may impose administrative penalties and sanctions against those found to have violated the law.

Computer use/ misuse – college policies are explicit and any violation of these policies, to include hate mail, is totally unacceptable and will be dealt with accordingly.

Dress code

College of Medicine students, at all levels of education and training, are expected to maintain a proper professional image in their behavior and personal appearance at all times.

- a. All students should adhere to Islamic dress code rules and cover their heads with proper hijab.
- b. All students should abide by established Dress Code when in the college/Professional Practice Experience sites and their photo ID badge
- c. Clothing shall not indecently expose parts of the body, be transparent, or display obscene or offensive pictures and slogans.
- d. Attire shall be clean and shall have proper fit and length. The following apparel is considered inappropriate:
 - Torn, ripped or frayed clothing.
 - Midriff or off-the-shoulder blouses, sweaters or dresses.

- Tight, sheer or revealing clothes.
 - T-shirts (tight)
 - Excessive tattooing on neck/arms/hands.
 - Flashy colored clothes
- e. Excessive jewelry, perfumes and make-up should be avoided.
- f. Long skirts should not trail.
- g. All students shall wear their photo ID badge while in college or training sites for security reasons.
- h. White lab coats with name tags shall be worn by all students during practical classes and clinical sessions.

Admission Requirements

	<i>MBBCh (DMCG)</i>
<i>Admission Requirements</i>	<ol style="list-style-type: none"> 1. Higher Secondary Certificate in Science subjects. 2. Such a certificate must be of the same year, or a year before, and duly attested by the competent authority. 3. The applicant must complete 12 years of education in school. 4. Equivalence certificate from the Ministry of Education for the grade 12 passed (as equivalent to the higher secondary certificate of the Ministry of Education – UAE). 5. Standardized English Examination (EmSAT Achieve – English with a minimum grade of at least 1100 grades or TOEFL above 61 or IELTS above 5). (<u>Institutional TOEFL is NOT ACCEPTABLE</u>). 6. An EmSAT score of 800 for Arabic Language. 7. An EmSAT score of 900 in Mathematics or equivalent. 8. An EmSAT score of 900 in two of the three science subjects (Chemistry, Biology or Physics). 9. Passing the interview conducted by Dubai Medical College. 10. International students are required to fulfill all requirements for obtaining the equivalence certificate for the higher secondary education. Please refer to the following link: https://www.moe.gov.ae/en/eservices/servicecard/pages/certequivalent-out.aspx
<i>Documents Required</i>	<ol style="list-style-type: none"> 1. Higher Secondary certificate 2. Certificate showing results of standardized English examination 3. Character certificate 4. Medical Fitness Certificate 5. Passport copy 6. Emirates ID copy 7. Birth certificate 8. Six personal photographs 9. Entrance test fees for MBBCh program <p>Note: School certificates should be attested from place of issue:</p> <ul style="list-style-type: none"> ➤ Country of Study (Ministry of Education, Ministry of Foreign Affairs, the Embassy) ➤ UAE (Equivalency certificate from Ministry of Education)
<i>Conditional Admission</i>	<p>Eligible students who have pending documents and qualify for conditional admission are asked to sign an undertaking to provide all required documents</p> <p>Conditions for provisional admission</p> <ul style="list-style-type: none"> - If the student didn't provide the English Language Proficiency certificate - Pending certificate of equivalence. - Incomplete attestations for international student.

Transfer Policies:**General transfer policies:**

The following are the necessary stipulations for transfer to the DMCG from other Colleges:

1. DMCG accept transfer of students from accredited colleges with a comparable curriculum that is to that offered at the respective college
2. Student applying for transfer must spend more than 50% of teaching hours for all subjects at the respective college
3. The student must provide a letter of application to the Dean of the college specifying reason(s) for requesting transfer and desired date of transfer.
4. Applicants are required to submit their transcripts for evaluation of transferable subject's /Teaching hours from previous college experiences.
5. Students must meet the English language proficiency requirements for the respective program as set by the Ministry of Education, UAE.
6. No student who has been dismissed from any medical or pharmacy college will be eligible for transfer to DMCG.
7. All applicants must provide conduct certificates from the institute where they are currently enrolled.
8. Previous coursework deemed appropriate to the current course of study is evaluated for transfer into the college's program. Transferring previous teaching hours can help avoid overlap of subjects to complete the program degree.
9. All applicants should contact the admissions department to inquire about having their transcripts reviewed.
10. Before attending college, attested records from the previous college and higher secondary school should be submitted to the Dean's secretary as soon as possible.
11. The student transferring from another accredited college may receive score for courses completed with a grade of "C" or better if the course is applicable to the student's program at DMCG.
12. After review of the transfer request by the Dean, the final decision for approval of transfer will be made by the respective faculty board (DMCG).
13. Deadline for receipt of transfer request for an academic year is in January of a given year
14. Before considering any application for transfer, existence of an appropriate seat for the student should be considered.

transfer policies:

The student transferring from another accredited college must be in a good academic standing (a minimum CGPA of 2.0, C grade, on a 4.0 scale or equivalent).

Advanced Standing:

At the moment DMCG do not accept any form of non-degree certificates, non-credit courses or advanced high school subjects as an equivalent to any of the credit hour courses offered at any one of the university accredited programs. In case, a student with exceptionally advanced standing applies, the application will be forwarded it to the respective commission for final approval.

Recognition of prior learning (RPL):

RPL does not apply to MBCh.

Withdrawal policy

The policy deals with DMCG students who leave through the processes of withdrawal, leave, dismissal, or discontinuation and who subsequently seek readmission to the College.

1. Withdrawal during the first year of the college.
 - a. If withdrawal is required by a student, a written petition for withdrawal is made and approved by the Dean of the college.
 - b. A student who withdraws in the first year of the college for other than health reasons and wishes to return to the school must reapply through the regular first year admissions process as if she were a new applicant.
 - c. If the student withdraws because of illness during the first year, she will be allowed to apply for readmission through a valid medical certificate. Permission to reapply does not guarantee readmission.
2. Withdrawal subsequent to completion of the first year of the college.
 - a. If withdrawal is required by a student, a petition for withdrawal is made and approved by the Dean of the college.
 - b. If such a student wants readmission, an application for readmission is made in writing to the admission office. This application must be accompanied by the relevant supporting documents, such as letters from the applicant's physician(s), employer(s), etc.
 - c. Readmission may be offered to a student in good standing who has completed one or more years of study. Good standing designates any student not subject to probation or disqualification. Permission to reapply does not guarantee readmission. Each re-application will be considered on a case-by-case basis.
 - d. The student will be informed in writing by the college at the time of the withdrawal whether she will be permitted to re-apply and under what circumstances.

Leave of Absence from the college

1. Students may seek a leave of absence for a particular purpose, for a defined period of time and with the intention of returning to the college. Returning from such an approved leave of absence requires a re-admission petition.
2. The Dean of the college may grant a student up to a one-year leave of absence for personal, professional or medical reasons. This leave of absence may be renewed for up to one year at the discretion of the Dean in consultation with the Faculty Board.
3. The Dean may grant a student who is enrolled in a formal degree program at another university an extended leave of absence. The student must apply annually in writing for renewal of an extended leave of absence.
4. A student who is not enrolled in an external degree program and who requires a longer leave than two years, or who is denied an extension of her leave of absence, must petition for a withdrawal and is advised to consult with the Dean. If the student fails to obtain a withdrawal, the student will be discontinued.

Review of applications for Re-admission:

1. A student who has withdrawn (but subsequently wishes to return to school) must apply for readmission in writing and submit the required information, as stipulated by the School of Medicine at the time of withdrawal, to the Dean.

2. A Committee for Admission will review each student's written application for readmission in light of the entire record and including any required supporting documents. This Committee may recommend:
 - 1) readmission without conditions; 2) readmission with conditions, 3) denial of readmission until further proof of readiness to return to school can be demonstrated; or 4) denial of readmission.
3. This Committee shall consist of the Dean, Associate dean of Student Affairs committee, Head of Admission Committee.
4. Recommendations of this Committee are advisory to the Dean. The decision of the Dean is final, and no appeals are allowed.

Tuition fee

Particulars	MBBCh	Mode of Payment
Student Intake	60-65	
Tuition Fee	120,000 per year (+5% VAT applicable)	50% of annual tuition fee at time of admission. Two installments every year
Transport (+5% VAT applicable) Abu Dhabi, Fujairah, Al Ain, Baniyaas (on weekends only)	AED 5000 per year	Two installments/year
Transport (Dubai) (Muhaisnah, Mizhar, Murdif, Rashidiya, Tawar, Qusais, Nahda)	AED 3000 per year	Two installments/year
Transport (Dubai daily) (other areas)	AED 4000/-	Two installments/year
Transport (Sharjah and Ajman daily)	AED 5000/-	Two installments/year
Annual Hostel Fee (Only for females)	AED 12,000 - AED 22,000	Two installments/year
Refundable insurance (for hostel)	AED 500/-	

Refund Policy of Tuition Fees

Dubai Medical College admits only a very limited number of students, so if any student after admission cancels her admission, then this will create a vacancy which could have been used by another qualified student. Therefore, the College authorities are strict in their action for such students, and they will not refund the fees paid at the time of admission until and unless a valid reason is provided for cancellation of admission.

The valid reasons can be: -

1. If a candidate faces visa difficulties from U.A.E. govt. that are out of College Control.
2. If the guardian of the candidate faces sudden employment problems, such as termination, visa cancellation etc.
3. If a candidate is granted a scholarship provided that it occurs after the date of fee payment.

The refund usually is granted to student in first or second week after commencement of academic year to which they are admitted.

Refund requests should be made at the Registration office through a written request enclosing the ID card and original fee receipt. Refunds will be made after clearance of dues, if any. The amount paid is construed as your booking the seat for yourself in the college. The refund policy applicable is as follows:

In the case of withdrawal before joining the college	5% (applicable only on tuition fees) is deducted and remaining is refunded.
For every month of attendance in case of withdrawal after joining the college:	
MBBCh	10% of tuition fee deducted for every month of attendance

Mode of payment:

- Direct payment to Finance Department of the College or through deposit in the college account in any branch of Dubai Islamic Bank in the UAE.

Policy of tuition fees change

- DMCG reserves the right to review and reassess the tuition fee rates annually. The fees may be subject to change after approval of the Chairman of Board of Trustees.
- A tuition fee schedule should be published annually prior to registration of new students.
- After enrollment, no change of tuition fees would be applied during the duration of the study for both undergraduate and graduate college programs.
- Students who fail and repeat the year will pay the fees applied to the new batch they are joining.

1) PROGRAM LEARNING OUTCOMES

These program learning outcomes (PLO) are prepared in alignment with Level 7 (Bachelor's Degree) of Qualifications Framework -Emirates (QF-E), as required by Commission of Academic Accreditation (CAA).

QF-E Strands	On successful completion of the MBBCH Program of DMCG, the graduate will be able to
Knowledge	<p>A-1 Demonstrate factual and theoretical knowledge with substantive depth in areas of core biomedical, psychosocial and clinical sciences and integrate this knowledge with general medical practice</p> <p>A-2 Apply the knowledge of these disciplines in clinical context for diagnosis, prevention and management of clinical conditions within the framework of ethical and legal regulations at the level of General Practitioner and in preparation for future specialist training.</p> <p>A-3 Critically analyze existing literature with an understanding of research tools and apply the knowledge of scientific basis to make decisions in patient care to promote health, prevent disease and treat illnesses in the community and specialized healthcare centers</p>
Skill	<p>B-1 Demonstrate clinical and cognitive skills/problem solving skills of obtaining and interpreting history, conducting clinical examination and synthesizing the findings to provide differential diagnosis and suggest the most likely diagnosis for a variety of clinical problems.</p> <p>B-2 Choose appropriate investigations and management strategies at the level of a general practitioner and the need for specialist referral, for a wide range of conditions during clinical encounter with patients</p> <p>B-3 Communicate effectively and compassionately with patients, relatives, teachers, peers and other professionals in verbal, written and electronic means using advanced communication and information technologies in a professional manner.</p>
Aspects of Competence (Autonomy & Responsibility, Role in context & Self Development)	<p>C-1 Develop approaches to evaluate and improve healthcare literacy and awareness, epidemiology of diseases and healthcare delivery systems, and provide suggestions for improving quality and optimizing patient safety through a continuous process of auditing</p> <p>C-2 Work individually and as a team member and leader of inter-professional healthcare teams demonstrating principles of handing-over and emphasis on life-long learning</p> <p>C-3 Manage patient care under supervision in a primary care setting to treat acute, chronic or emergency conditions of patients, within the limits permissible to an entry level General Medical Practitioner, with ability to properly refer cases that need specialist attention.</p> <p>C-4 Observe principles of medical ethics, anonymity and confidentiality; and demonstrate honesty, integrity, altruism, empathy and social responsibility in their interaction with peers, patients in a multicultural context.</p>

2) TEACHING PLAN (Draft)

SEMESTER 1						SEMESTER 2										
	Aug	Sep	Oct	Nov	Dec	Jan	Feb	Mar	Apr	May	Jun	Jul				
Y1	SUMMER VACATION	Anatomy(1101), Biochemistry(1102),Physiology(1111) Histology(1106), Comm.Medicine(1103),				WINTER VACATION		EXAM	Anatomy(1201), Biochemistry(1202), Immunology(1204), Physiology(1111), Histology(1106), Comm.Medicine(1103), <i>(includes 1 week spring break)</i>					EXAM	Mock IFOM	SUMMER VACATION
		Clinical Skills, Longitudinal cases & 21st Century Skills							Clinical Skills, Longitudinal cases & 21st Century Skills							
Y2		General module	Molecular Biology	Alimentary system				EXAM	Cardiovascular System		Respiratory System	Renal System	Miscellaneous	EXAM	Mock IFOM	
		Clinical Skills, Longitudinal cases & 21st Century Skills							Clinical Skills, Longitudinal cases & 21st Century Skills							
Y3		Endocrine & Reproductive	Nervous System		EXAM		Proposed time for IFOM 1	Clinical Introductory Course		SPRING BREAK	Ped. gp A & C 8 wks		Gyne gp A&C 8 wks			
		Clinical Skills, Longitudinal cases									Gyne Gp B&D 8 weeks		Ped. gp B&D 8wks			
Y4		Ped. gp A & C 8 weeks		Gyne Gp A&C 8weeks			EXAM				PHC & Research gp 1	Elective training				
		Gyne Gp B&D 8 weeks		Ped gp B&D 8weeks							Surgery & A/E gp2					
											Gen. Medicine gp 3					
Y5		Surgery A/E gp1						Gen. Medicine gp1				EXAM		INTERNSHIP		
		Gen. Medicine gp2						PHC & Research gp2			Elective training					
	PHC & Research gp3			Elective training		Surgery A/E gp3										

The time of starting may change slightly (upto 7 days) from year to year based on the dates of holidays announced by Ministry of Education, UAE.

Ped Pediatrics

Gyne Obstetrics and Gynecology

Gen. Med Internal Medicine & Specialities

PHC Primary Healthcare (out of 18 weeks, 2 weeks will be moved to internal medicine, and 2 weeks to surgery dept.)

Each module of second year includes Anatomy, Histology, Physiology, Microbiology, Parasitology, Pathology, Pharmacology & Community medicine

The College follows a program of intensive teaching for a period of six years. This comprises of a preclinical phase, a clinical phase and an internship phase.

Pre-Clinical Phase

- The pre-clinical phase lasts two and a half years.
- The teaching program is conducted in the College's campus in Muhaisnah-1 – Deira.
- Classes commence in late August.
- Each academic year is divided into two semesters.
- There is a two-week holiday at the end of the first semester and summer holidays after the second semester.

Clinical Phase

- Students who have successfully passed all subjects in the pre-clinical phase are transferred to the clinical phase of the course at the beginning of February.
- The duration of the clinical phase is of two and a half years.
- The clinical phase's undergraduate teaching is carried out entirely in hospitals, clinics, primary health care centers and teaching facilities provided by the Dubai Health Authority (DHA).
- The main teaching sites are the faculty building in the Rashid Hospital campus and the wards, clinical diagnostic facilities and clinics at the Rashid Hospital, the Trauma Centre (Rashid Hospital), the Dubai Hospital and the Latifa Hospital. In addition, students spend a period of 20 weeks training in the Primary Health Care centers attached to the DHA.
- Teaching is conducted through didactic lectures covering all aspects of medical practices. Lectures are held in the afternoon in the lecture theatres at Rashid Hospital, Dubai Hospital and Al Wasl Hospital. These activities along with the revision courses in the 5th year are delivered 5 times a week.

An essential part of the clinical phase teaching is the acquisition of technical and clinical skills essential to the practice of medicine. In order to acquire these competencies, skills and attitudes, students are divided into small groups (about 6 students) to do clerkships, which involve examining patients and participating in their management under the supervision of teaching staff. They attend ward rounds, teaching rounds, observe procedures and operations, and involve themselves in small group discussions in case presentations.

Students are taught the basic skills of history-taking and clinical examination in lecture halls and seminar rooms equipped with all of the necessary teaching aids. They are trained in clinical skills at the Simulation Lab and the clinical skill slab from year 1 to year 5.

Internship Training Phase

- Students who have successfully completed their clinical phase move onto the internship training phase.
- The total internship training program has a normal duration of 52 consecutive weeks.
- Internship training has two start dates per year: the closest August Sunday to the beginning of the month and the closest February Saturday to the beginning of the month.

The purpose of the internship training program is for the graduate to have concentrated clinical

Experience in all of the major medical specialties, including Internal Medicine, Surgery, Pediatrics, Obstetrics/Gynecology, Family Medicine and Psychiatry.

3) Academic Calendar

First Semester			
Event	Day	Dates	Date /Hijri
Beginning of 1 st Semester 2021/2022	Sunday	29/08/2021	20/01/1443
2020/2021 Re-sit Exams Year 1(Batch35) & Year 2(Batch34)	Monday	30/08/2021	21/01/1443
Year 1 (Batch 36) commence classes White Coat Ceremony	Sunday	05/09/2021	27/01/1443
1 st Comprehensive Exams Year 2 (Batch 35)	Sunday	19/09/2021	11/02/1443
1 st Comprehensive Exam Year 3 (Batch 34)	Sunday	26/09/2021	18/02/1443
2 nd Comprehensive Exams Year 2 (Batch 35)	Sunday	17/10/2021	10/03/1443
Mid- Semester Exams Year 1 (Batch 36)	Sunday Thursday	31/10/2021 04/11/2021	24/03/1443 28/03/1443
2 nd Comprehensive Exams Year 3 (Batch 34)	Sunday	07/11/2021	01/04/1443
End of Term (II) Exams (PHC) Year 5 (Batch 32)	Wednesday	03/11/2021	27/03/1443
End of Term (II) Exams (Med/Surg) Year 5 (Batch 32)	Week of	27/11/2021	21/04/1443
Term (III) commences (Med/Surg/PHC) Year 5 (Batch 32)	Sunday	05/12/2021	29/04/1443
3 rd Comprehensive Exams Year 2 (Batch 35)	Monday	06/12/2021	01/05/1443
Final Exams of Year 3 (Batch 34)	Tuesday	07/12/2021	02/05/1443
Announcement of Results Year 3 (Batch 34)	Thursday	16/12/2021	11/05/1443
Winter Vacation	Sunday Saturday	19/12/2021 01/01/2022	14/05/1443 27/05/1443
Final & Mid-Year Exams (1 st Semester) for Year 1 (Batch 36) & Year 2 (Batch 35)	Sunday Thursday	09/01/2022 03/02/2022	05/06/1443 01/07/1443
Re-sit exam Year 3 (Batch 34)	Sunday	16/01/2022	12/06/1443
Final Exam Year 4 (Batch 33)	Week of	16/01/2022	12/06/1443
End of First Semester – NO HOLIDAY			
Second Semester			
Commencement of Classes	Sunday	06/02/2022	04/07/1443
Year 4 (Batch 33) Commence Final Year	Sunday	06/02/2022	04/07/1443
Introductory Course Starts for Year 3 (Batch 34)	Sunday	06/02/2022	04/07/1443
Announcement of Results Year 1 (Batch 36) & Year 2 (Batch 35)	Thursday	10/02/2022	08/07/1443
1st Comprehensive Exam Year 2 (Batch 35)	Sunday	13/03/2022	09/08/1443

◆ End of Term (III) Exams (PHC) Year 5 (Batch 32)	Thursday	24/ 03/2022	20/08/1443
◆ Spring Vacation	Sunday Saturday	27/03/2022 02/04/2022	23/08/1443 29/08/1443
◆ Mid- Semester Exams Year 1 (Batch 36)	Sunday Saturday	10/04/2022 16/04/2022	08/09/1443 14/09/1443
◆ 2 nd Comprehensive Exam Year 2 (Batch 35)	Monday	11/04/2022	09/09/1443
◆ End of Term (III) Exams (Med/Surg) Year 5 (Batch 32)	Week of	24/4/2022	22/09/1443
◆ 3rd Comprehensive Exam Year 2 (Batch 35)	Sunday	08/05/2022	06/10/1443
◆ Final Exit Exam for (Med /Surg /PHC) Year 5 (Batch 32)	Week of	15/5/2022	13/10/1443
◆ End of Term (I) exam for Year 4 (Batch 33)	Week of	12/6/2022	12/11/1443
◆ Final Exams (2 nd Semester) Year 1 (Batch 36) & Year 2 (Batch 35)	Sunday	05/06/2022	05/11/1443
◆ Announcement of all Results	Thursday	07/07/2022	07/12/1443
◆ Summer Vacation Begins	Saturday	09/07/2022	09/12/1443

Event	Date
◆ Prophets Birthday*	Tuesday 19 th October 2021
◆ Martyr's Day	Wednesday 1 st December, 2021
◆ UAE National Day	Thursday and Friday 2nd - 3rd December, 2021
◆ New Year's Day	Saturday, 1 st January 2022 – during winter break
◆ 29 th Ramadhan - Eid Al Fitr Holiday*	Sunday 1 st May – Thursday 5 th May, 2022
◆ Arafah & Eid Al Adha holiday *	Saturday 9 th July - Wednesday 13 th July 2022– during summer vacation
◆ 1444 Hijri New Year *	Sunday 31 st July 2022 – during summer vacation

Note: Islamic holidays are determined after sighting of the moon. Thus, actual dates may not coincide with the dates in the calendar

* Dates of Islamic holidays are subject to change in accordance with the moon sighting and official announcement

**Beginning of Academic Year 2022-2023 will be on: Sunday 21st August, 2022

4) COURSE DESCRIPTION

DMCG lectures uses the system of contact hours for calculation of teaching and learning sessions. One contact hour is equivalent to 55 minutes of lecture time.

The number of courses, the order of teaching those courses, and the total contact hours for each course, are fixed for MBBCh program. All students will follow the same course schedule over the period of five years.

DESCRIPTION OF SUBJECT IN **Basic Medical Sciences Phase**

SUBJECT Anatomy	THEORY HOURS 266Hrs s	PRACTICAL HOURS 70Hrs	TOTAL HOURS 336Hrs	TOTAL MARKS 360
--------------------	--------------------------------	-----------------------------	--------------------------	--------------------

TOPICS OF SUBJECT STUDIED: -

General Embryology- Lower Limb- Upper Limb- Abdomen and Pelvis- Thorax- Head and Neck- Neuro Anatomy- Special Embryology related to each part.

SUBJECT Biochemistry	THEORY HOURS 190Hrs	PRACTICAL HOURS 40Hrs	TOTAL HOURS 230Hrs	TOTAL MARKS 220
-------------------------	---------------------------	-----------------------------	--------------------------	--------------------

TOPICS OF SUBJECT STUDIED: -

Cell- Vitamins- Minerals- Nutrients- Lipid Metabolism- Carbohydrates- Proteins- Immunoglobulin's- Carbohydrate Metabolism- Enzymes- Biological Oxidation- Protein Metabolism and neurotransmitters- Tumor Markers- Organ Function Test- Hemoglobin- Myoglobin- Chemistry and Metabolism of Hormones- Purines and Pyrimidines- Genetics and Porphyrin Metabolism.

SUBJECT Histology	THEORY HOURS 117Hrs	PRACTICAL HOURS 44Hrs	TOTAL HOURS 161Hrs	TOTAL MARKS 150
----------------------	---------------------------	-----------------------------	--------------------------	--------------------

TOPICS OF SUBJECT STUDIED: -

Cytology: Cyto-Genetics Microtechniques-Body Tissues- Skin- Blood-Cartilage- Bone-Muscles- Circulatory and Lymphatic Systems- Respiratory- Renal System- Digestive Systems. Endocrine Glands- Reproductive System- Special Sense System- Central Nervous System.

SUBJECT Physiology	THEORY HOURS 298Hrs	PRACTICAL HOURS 36Hrs	TOTAL HOURS 334Hrs	TOTAL MARKS 360
-----------------------	---------------------------	-----------------------------	--------------------------	--------------------

TOPICS OF SUBJECT STUDIED: -

Cell- Muscles and Nerves- Blood- Autonomic Nervous System- Respiration- Heart and Blood Vessels- Digestive system and Metabolism- Kidney. Endocrine Glands and Reproductive system- special Senses- Central Nervous System. - Behavioral Sciences.

SUBJECT Parasitology	THEORY HOURS 72Hrs	PRACTICAL HOURS 24Hrs	TOTAL HOURS 96Hrs	TOTAL MARKS 100
-------------------------	--------------------------	-----------------------------	-------------------------	--------------------

TOPICS OF SUBJECT STUDIED: -

Helminthology- Medical Entomology- Protozoa

SUBJECT Pharmacology	THEORY HOURS 173Hrs	PRACTICAL HOURS 21Hrs	TOTAL HOURS 194Hrs	TOTAL MARKS 220
-------------------------	---------------------------	-----------------------------	--------------------------	--------------------

TOPICS OF SUBJECT STUDIED: -

General Pharmacology- Antiviral- Anticancer- Antibacterial- Chelating agents & Vitamins- Drugs used in treatment of diseases of (Nervous System- Muscles- Respiration- Urinary and Circulatory Systems- Blood- Allergy- Digestive- Central Nervous System- Endocrine System).

SUBJECT Pathology	THEORY HOURS 185Hrs	PRACTICAL HOURS 42Hrs	TOTAL HOURS 227Hrs	TOTAL MARKS 220
----------------------	---------------------------	-----------------------------	--------------------------	--------------------

TOPICS OF SUBJECT STUDIED: -

I. General Pathology and Immuno pathology

II. Systemic Pathology, Diseases of.: Cardiovascular System- Respiratory System- Urinary System- Digestive System- Endocrine System- Male Genital System- Female Genital System- Breast- Blood- Lymphatic System- Bone –Muscles- Nervous System.

SUBJECT Microbiology & Immunology	THEORY HOURS 115Hrs	PRACTICAL HOURS 25Hrs	TOTAL HOURS 140Hrs	TOTAL MARKS 150
---	---------------------------	-----------------------------	--------------------------	--------------------

TOPICS OF SUBJECT STUDIED: -

General Microbiology- Immunology- Bacteriology- Virology- Mycology.

SUBJECT Community Medicine	THEORY HOURS 118Hrs	PRACTICAL HOURS -Hrs	TOTAL HOURS 118Hrs	TOTAL MARKS 120
----------------------------------	---------------------------	----------------------------	--------------------------	--------------------

TOPICS OF SUBJECT STUDIED: -

Statistics + Environment- General Epidemiology- Nutrition- Primary Health care- Communicable Diseases and Non-Communicable Diseases.

SUBJECT Fiqh Islami	THEORY HOURS 64Hrs	PRACTICAL HOURS -Hrs	TOTAL HOURS 64Hrs	TOTAL MARKS 100
------------------------	--------------------------	----------------------------	-------------------------	--------------------

TOPICS OF SUBJECT STUDIED: -

The Faith, Laws of Shariah concerning Economy, Politics and Social Affairs. Knowledge of important Islamic teachings. Laws concerning the responsibilities of persons working in medical and pharmaceutical professions. Position of Shariah in respect of contemporary problems, e.g., transplantation of body organs, cloning, plantation of embryo, clinical death, etc. Knowledge of human soul (conscience or psyche) as spelled out by Allah in the Quran. Biographies. Surat Al-Noor.

SUBJECT Clinical skills & PHC visits	THEORY HOURS -Hrs	PRACTICAL HOURS 76Hrs	TOTAL HOURS 76Hrs	TOTAL MARKS (Calculated as 2% from the scientific activity marks of each subject)
--	-------------------------	-----------------------------	-------------------------	---

TOPICS OF SUBJECT STUDIED: -

Orientation of the components of PHC, Maternal health care program, Child health care program, School health care program, Geriatric health care program, Communication skills, Basic clinical skills, Cardiovascular system, Diabetes Mellitus and obesity, Bronchial asthma, Body imaging, Laboratory visit, Pharmacy visit.

DESCRIPTION OF SUBJECT IN General Education:

SUBJECT Medical Terminology	THEORY HOURS 20Hrs	PRACTICAL HOURS -Hrs	TOTAL HOURS 20Hrs	TOTAL MARKS Non-graded course
-----------------------------------	--------------------------	----------------------------	-------------------------	-------------------------------------

TOPICS OF SUBJECT STUDIED: -

Word Building, Pronunciation, Prefix, Suffix, Word Root, Combining Vowel, Medical Abbreviations, Medical Subjects & Specialists, Singular and Plural Endings, Body Systems, Scientific Writing.

SUBJECT History of Medicine	THEORY HOURS 10Hrs	PRACTICAL HOURS -Hrs	TOTAL HOURS 10Hrs	TOTAL MARKS Non-graded course
-----------------------------------	--------------------------	----------------------------	-------------------------	-------------------------------------

TOPICS OF SUBJECT STUDIED: -

Introduction, what is Health, Disease? Rise of Medicine Science, History of Hospitals, Surgery, Drug Treatment and the rise in Pharmacology, Islamic Medicine, Pioneer in Medicine, from observation to prevention, Looking to the Future

SUBJECT Communication Skills	THEORY HOURS 10Hrs	PRACTICAL HOURS -Hrs	TOTAL HOURS 10Hrs	TOTAL MARKS Non-graded course
---------------------------------	--------------------------	----------------------------	-------------------------	-------------------------------------

TOPICS OF SUBJECT STUDIED: -

Introduction to Communication Skills, Barriers of Communication, Verbal and Non-Verbal Communication, Public Speaking, Effective Communication, History Taking

SUBJECT Medical Education	THEORY HOURS 14Hrs	PRACTICAL HOURS -Hrs	TOTAL HOURS 14Hrs	TOTAL MARKS Non-graded course
------------------------------	--------------------------	----------------------------	-------------------------	-------------------------------------

TOPICS OF SUBJECT STUDIED: -

Teaching Methods in Medical Education, Problem Based Learning Workshop, Learning Styles, Study Skills, and Assessment in Medical Education, Bloom's Taxonomy and Miller's Pyramid, Critical Thinking Skills.

SUBJECT Medical Informatics	THEORY HOURS 20Hrs	PRACTICAL HOURS -Hrs	TOTAL HOURS 20Hrs	TOTAL MARKS Non-graded course
--------------------------------	--------------------------	----------------------------	-------------------------	-------------------------------------

TOPICS OF SUBJECT STUDIED: -

Introduction to Informatics, Time Management, Information Quality, Critical Thinking, Computer Assisted Communication, Telemedicine and Tele-care, Evidence-based Medicine, Hospital Information System

SUBJECT General Psychology	THEORY HOURS 10Hrs	PRACTICAL HOURS -Hrs	TOTAL HOURS 10Hrs	TOTAL MARKS Non-graded course
-------------------------------	--------------------------	----------------------------	-------------------------	-------------------------------------

TOPICS OF SUBJECT STUDIED: -

Introduction: Foundation, Schools, Biopsychology, The Link Between Psychology & Biology - Personality: Development, Theories, Link Between Nature and Nurture - Behavior: Basic Aspects, Normal And Up-Normal - Health: Stress, & Coping - Psychological Disorder: Theories, Symptoms

SUBJECT Professionalism	THEORY HOURS 14Hrs	PRACTICAL HOURS -Hrs	TOTAL HOURS 14Hrs	TOTAL MARKS Non-graded course
----------------------------	--------------------------	----------------------------	-------------------------	-------------------------------------

TOPICS OF SUBJECT STUDIED: -

Pillars of Medical Professionalism, Professional responsibilities -ACGME Competencies, Professionalism in medical students, Professional misconduct, Organizational Behavior- EQ, Employability, Time management, Communication skills, Bad news, Conflicts in Professionalism, Social Responsibility, Cultural sensitivity, Giving and accepting feedback, Team-work and Clinical Leadership.

DESCRIPTION OF SUBJECT IN *Clinical Phase*

SUBJECT Introductory Course (6 Weeks)	THEORY HOURS 40 Hrs	PRACTICAL HOURS 60 Hrs	TOTAL HOURS 100Hrs
--	------------------------	------------------------------	-----------------------

TOPICS OF SUBJECT STUDIED: -

Clinical Sessions (60Hrs), Presenting Symptoms (12Hrs), Communication Skills (8Hrs), Health Informatics (16Hrs), Statistics (4Hrs).

SUBJECT Paediatrics (16 Weeks) + (2 weeks for exams)	THEORY HOURS 100Hrs	PRACTICAL HOURS 175 Hrs	TOTAL HOURS 275Hrs
TOPICS OF SUBJECT STUDIED: - General Paediatrics with its subdivisions including Neonatology and Genetics.			

SUBJECT Obstetrics & Gynaecology (16 Weeks) + (2 Weeks for Exams)	THEORY HOURS 100Hrs	PRACTICAL HOURS 175Hrs	TOTAL HOURS 275Hrs
TOPICS OF SUBJECT STUDIED: - Obstetrics & Gynaecology with all the subdivisions including conception & contraception.			

SUBJECT General Medicine (22 Weeks)	THEORY HOURS 250Hrs	PRACTICAL HOURS 400Hrs	TOTAL HOURS 650Hrs
TOPICS OF SUBJECT STUDIED: - General Medicine, Infectious Disease, Cardiology, Respiratory Medicine, Endocrinology & Diabetes, Rheumatology, Renal Medicine, Intensive & Critical Care, Oncology, Haematology & Thalassaemia, Gastroenterology, Dermatology, Neurology, Psychiatry and Therapeutics.			

SUBJECT Primary Health Care (16 Weeks)	THEORY HOURS 50Hrs	PRACTICAL HOURS 400Hrs	TOTAL HOURS 450Hrs
TOPICS OF SUBJECT STUDIED: - Organisation of PHC, exposure to clinical problems relating to Primary Health Care. The care of chronic diseases, prevention of diseases, geriatric care and school clinics.			

SUBJECT Surgery (22 Weeks): Accident & Emergency Medicine Surgery	THEORY HOURS 250Hrs	PRACTICAL HOURS 200Hrs 200Hrs	TOTAL HOURS 650Hrs
TOPICS OF SUBJECT STUDIED: - General Surgery, Vascular Surgery, Orthopaedic/Trauma, Neurosurgery, Cardiothoracic Surgery, Urology, ENT, Ophthalmology, Anaesthesia, Radiology, Histopathology, Forensic Medicine & Accident & Emergency.			

Total marks for Medicine, Primary Healthcare and Surgery together are out of 1200.

Marks for Pediatrics is 300

Marks for Obs/Gynae is 300

5) GRADING SCHEME

Students are given grades for each of the courses in the preclinical and clinical phases.

- Excellent 85% and above
- Very Good 75-84.9 %
- Good 65-74.9 %
- Pass 60-64.9 %

6) ACADEMIC PROGRESS

The student should pass in all the courses in each academic year in the preclinical and clinical years to be promoted to the next year.

The total allocation of marks for the clinical phase are 2000 (similar to the allotment of marks for the pre-clinical course), and the allocation of marks is calculated from the following table:

Pre-Clinical phase

S. No	SUBJECTS	MAXIMUM MARKS ALLOTTED	MINIMUM PASSING MARKS
1.	Biochemistry	220	132
2.	Anatomy	360	216
3.	Physiology	360	216
4.	Histology	150	090
5.	Pathology	220	132
6.	Pharmacology	220	132
7.	Microbiology	150	090
8.	Parasitology	100	060
9.	Community Medicine	120	072
10.	Fiqh Islami	100	060
TOTAL		2000	1200

Clinical Sciences phase:

S. No	SUBJECTS	MAXIMUM MARKS ALLOTTED	MINIMUM PASSING MARKS
1.	Medicine, Surgery & PHC	1200	720
2.	Logbook & Research	200	120
3.	Pediatrics	300	180
4.	Obst/ Gynae	300	180
TOTAL		2000	1200

A⁺ = Superior (95% & above)
C = Good (65% - 74.9%)

A = Excellent (85% - 94.9%)
D = Pass (60% - 64.9%)

B = Very Good (75% - 84.9%)
F = Fail (below 60%)

The table illustrates the maximum marks and the minimum marks for passing that are allocated to each subject.

The requirements for graduation are: -

- Successfully complete and pass exams of all the courses in the preclinical and clinical phases.
- Successfully complete the internship training phase.

7) FACULTY FOR MBBCH

Teaching Faculty (Preclinical)

S. No.	Name	Post / Title
1	Mohamed Galal EIDin Ahmed	Dean, Professor & Head of Anatomy Dept.
2	Nadia Mahmoud Mohamed Aly El Rouby	Associate Dean of Student & Admission Affairs
3	Malak Shaheen	Associate Dean - Academic Affairs
4	Fouzia Shersad	IE Director
5	Abeer Abd El Moneim Said Ibraheem	Associate Professor
6	Naglaa Raafat AbdRaboh Soliman	Professor
7	Iman Irfan Abdeen	Assistant Lecturer
8	Shefaa M. Gawish	Professor & Head of Educational Support
9	Hajer Nisar Sheikh	Assistant Lecturer & IE member
10	Sadiah Jamil	Teaching Assistant
11	Samia Mahmoud Hasan Farghaly	Professor, Head of Academic Dept. Primary health care
12	Haba Faiz A. Al Samman	Assistant Lecturer
13	Magda Abdel Rahman Ismail	Professor & Head of Examination Affairs
14	Jenan Al Baeat	Assistant Professor
15	Heba Ismail Abdel Reheem Elshafey	Teaching Assistant
16	Ghazala Mehdi	Professor
17	Rasha Ali Abdelrazek Eldeeb	Associate Professor
18	Tasneem Sandozi	Professor
19	Shifan Khanday	Associate Professor
20	Wafik Hassan Kamel Shafik	Associate. Professor
21	Badriya AbdulRaouf Abdulrahman Alawar	Professor & Head of Academic dept of Pediatrics
22	Amina Begum	Teaching Assistant
23	Sara Safwat Ibrahim	Teaching Assistant
24	Momna Basheer Muhammad Basheer	Teaching Assistant
25	Rania Hamed Abdelaty Shalaby	Assistant Professor
26	Hafez Abdel Fattah Ahmed	Professor & Head of Biochemistry
27	Sahar Helmi Abdelmaqsoud	Associate Professor
28	Sumbal Riaz	Teaching Assistant
29	Eslam Mohammed	Assistant Professor
30	Mariam Shadan	Assistant Professor
31	Yi Liu	Instructional Designer
32	Alia Saleh Abd Elraheem Al Sawalha	Developer/System Support.
33	Mohamed Hussein Elsaid Elmasry	Research Fellow
34	Maha Ayman	Assistant Lecturer
35	Dina Mohamed	Assistant Professor

ADMINISTRATIVE STAFF OF DUBAI MEDICAL COLLEGE

S. No.	Name	Post / Title
1	Mohamed Galal ElDin Ahmed	Dean, Professor & Head of Anatomy Dept.
2	Abdul Hafeez Zafar	Librarian
3	Bushra Praveen	Assistant Librarian
4	Amal Darwish	Information System Specialist
5	Khan Fayez	Laboratories technician
6	Sumaiya Abdul Samad Muhammad	Secretary, Graduation Affairs.
7	Sadiya Sultana	Secretary, Students Affairs.
8	Fathima Ghani Abdul Malick	Secretary, Examination Affairs.
9	Dana Mazoua	Secretary, Students Affairs.
10	Asma Masour	Receptionist
11	Amira Mahmoud	Admin. In charge
12	Jay-Jay Simangan Paracad	Occupational Health & Safety Engineer
13	Fariha Tawab	HR Coordinator
14	Hania Saleh	Hostel Warden
15	Ishraga Mohammed Ali	Hostel Warden
16	Sadaf Batool Abdul Rahman	Hostel Secretary
17	Manal Mansour Mohammed	Hostel Secretary
18	Baljeet Kaur	Hostel Secretary

Teaching Faculty (Clinical)

ACADEMIC DEPARTMENT OF MEDICINE

Sn No.	Name	Post / Title
1	Prof. Dima Abdelmannan	Vice Dean, Clinical Affairs
2	Prof. J M Muscat-Baron	Adjunct clinical Professor, and Deputy Vice Dean - Clinical Affairs.
3	Dr. Afzal Hussein Yusufali	Adjunct Clinical Professor
4	Dr. Ahmed Abdul Karim Hassoun	
5	Dr. Ahmed Abdelmoniem Elsayed Ibrahim Negm	Clinical Tutor
6	Dr. Ahmed Saleh Abdou	Adjunct Clinical Assistant Professor
7	Dr. Amani Abdulla AlFalasi	Clinical Tutor
8	Dr. Amna Salem Al Mehairi	Adjunct Clinical Assistant Professor
9	Dr. Ashraf Mahmoud Euhoufi	
10	Dr. Bassam Mahboub	Adjunct Clinical Senior Lecturer
11	Dr. Dujana Mostafa Hamed	Adjunct Clinical Lecturer
12	Dr. Elhassan Sidahmed Elhassan	Adjunct Clinical Professor
13	Dr. Fadhil Mustafa Abdulla	Adjunct Clinical Senior Lecturer
14	Dr. Faisal Ahmed Elhussain Elbadawi	Clinical Tutor
15	Dr. Fatheya Fardallah Alawadi	Adjunct Clinical Associate Professor
16	Dr. Ghazi Ahmad Radaideh	Adjunct Clinical Professor
17	Dr. Hasan Mohamed Ali Radhi Al Yaseen	Adjunct Clinical Associate Professor
18	Dr. Humaid Ghanem	Adjunct Clinical Senior Lecturer
19	Dr. Jaheersha Pakran	Clinical Tutor
20	Dr. Jamal Ali Ali Al-Saleh	Adjunct Clinical Senior Lecturer
21	Dr. Jihad Said Inshasi	Adjunct Clinical Associate Professor
22	Dr. Khadija Ahmed Hafidh	Adjunct Clinical Associate Professor
23	Dr. Khawla Belhoul	
24	Dr. Mahmoud Mohammed Hassan Marashi	Adjunct Clinical Professor
25	Dr. Mazin Awad A Mukhtar	Adjunct Clinical Assistant Professor
26	Dr. Mohamed Jaffer Railey	Adjunct Clinical Senior Lecturer
27	Dr. Mohammed Baqer	Adjunct Clinical Senior Lecturer
28	Dr. Mohammed Nizam Iqbal	Adjunct Clinical Assistant Professor
29	Dr. Mona Al Rukhaimi	Adjunct Clinical Professor
30	Dr. Mustafa Ali Sabri	Adjunct Clinical Professor, Vice Chair of Medicine
31	Dr. Niaz Ahmed Shaikh	Adjunct Clinical Professor
32	Dr. Nooshin Mohd Bazargani	Adjunct Clinical Senior Lecturer
33	Dr. Pournamy Sarathchandran	Adjunct Clinical Senior Lecturer
34	Dr. Samia Abul Abdulla	Clinical Tutor
35	Dr. Sumaiya Maklai	Clinical Tutor
36	Dr. Yasmine Mohamed Shawki Kamal	Adjunct Clinical Senior Lecturer
37	Dr. Khadija Hafedh	Vice Chair of Academic Dept of Internal Medicine

ACADEMIC DEPARTMENT OF PEDIATRICS

Sn No.	Name	Post / Title
1	Prof. Badriya AbdulRaouf Abdulrahman Alawar	Professor & Head of Department
2	Dr. Ajmal Kader	Adjunct Clinical Assistant Professor
3	Dr. Akhter Mehmood	Clinical Tutor
4	Dr. Anwar Hamidullah Khan	Adjunct Clinical Associate Professor
5	Dr. Boudour Louai Khayer	Clinical Tutor
6	Dr. Entesar Abdulla Sultan Ali AlHammadi	Adjunct Clinical Assistant Professor
7	Dr. Fadhil Hussein Ghayb	Adjunct Clinical Assistant Professor
8	Dr. Farheen Khan	Adjunct Clinical Lecturer
9	Dr. Hani Mohamed Hussain Humad	Adjunct Clinical Assistant Professor
10	Dr. Hassan Ali Mundi	Adjunct Clinical Associate Professor
11	Dr. Hisham Marie Khalil	Adjunct Clinical Assistant Professor
12	Dr. Khaled Mahmoud ElAtawi	Adjunct Clinical Assistant Professor
13	Dr. Loai Akram Ouda Eid	Adjunct Clinical Associate Professor
14	Dr. Mahmoud Ahmad AlHussain	Adjunct Clinical Associate Professor
15	Dr. Mahmoud Galal Mahmoud Ahmed	Adjunct Clinical Professor
16	Dr. Marwa Abdel Zaher Bebars Mohamed	Clinical Tutor
17	Dr. Maysa Tawhid Mohamed Saleh	Adjunct Clinical Lecturer
18	Dr. Mennat Allah Mohamed Farouk Abdal Gawad Hussein	Clinical Tutor
19	Dr. Mohamed Ashraf Kandath	Adjunct Clinical Assistant Professor
20	Dr. Mohd Kafeel Khan	Clinical Tutor
21	Dr. Mukesh Kumar Singh Vijaypratap	Clinical Tutor
22	Dr. Muzammil Hafeez	Adjunct Clinical Lecturer
23	Dr. Nadia Ghazala	Adjunct Clinical Assistant Professor
24	Dr. Nadia Shukat	Adjunct Clinical Lecturer
25	Dr. Nilesh Gundawar	Clinical Tutor
26	Dr. Pawan Subhash Kashyape	Adjunct Clinical Lecturer
27	Dr. Samar Ahmed Ahmed Al Muntaser	Clinical Tutor
28	Dr. Sarmad Farook Yahya AlHamdani	Adjunct Clinical Assistant Professor
29	Dr. Sen Variaveettil Thomas	Adjunct Clinical Lecturer
30	Dr. Sobhy Elsayed Kotb Mohamed	Adjunct Clinical Assistant Professor
31	Dr. Yusuf Parvez	Adjunct Clinical Assistant Professor
32	Dr. Fadhil Hussein Ghayb	Lecturer
33	Dr. Asma Jassim Malallah	Lecturer
34	Dr. Mohamed Ashraf Kandath	Adjunct Clinical Lecturer
35	Dr. Yusuf Parvez	Adjunct Clinical Lecturer
36	Dr. Sarmad Farook Yahya AlHamdani	Lecturer
37	Dr. Mohamed Abd El Ghafar Abou Seif Badawi	Lecturer
38	Entesar Abdulla Sultan Ali AlHammadi	Lecturer

ACADEMIC DEPARTMENT OF OBST. /GYNAE.

Sn No.	Name	Post / Title
1	Prof. Nemat Abduljabbar	Adjunct Clinical Professor & Head of Department
2	Dr. Abeir Mahmoud Nouman Amar	Adjunct Clinical Senior Lecturer
3	Dr. Amal Mohammed Alqedrah	Adjunct Clinical Senior Lecturer
4	Dr. Ayesha Salman	Clinical Tutor

5	Dr. Ayisha Ejaz Bhutta	Clinical Tutor
6	Dr. Azza Elsayed Abdelmonem AlSayed	Adjunct Clinical Lecturer
7	Dr. Basma Abdo Murshed AlMaamari	Clinical Tutor
8	Dr. Bedaya Amro	Clinical Tutor
9	Dr. Bindu Issac	Clinical Tutor
10	Dr. Deba Jalal Nizami	Clinical Tutor
11	Dr. Eiman Saeed Al Zahmi	Clinical Tutor
12	Dr. Faiza Badawi Mahgoub	Adjunct Clinical Associate Professor
13	Dr. Fareeda Adam	Clinical Tutor
14	Dr. Fareeda Nikhat	Adjunct Clinical Senior Lecturer
15	Dr. Fatima Cherifi	Adjunct Clinical Lecturer
16	Dr. Hala Bashir	Clinical Tutor
17	Dr. Hanan Gharbi	Clinical Tutor
18	Dr. Hasseena Hassan	Clinical Tutor
19	Dr. Heba Ismail Adan	Clinical Tutor
20	Dr. Huda Faez Abdulsalam Alabdali	Clinical Tutor
21	Dr. Ikram Abdelaziz Salih Hassan	Clinical Tutor
22	Dr. Iman Al Halabi	Clinical Tutor
23	Dr. Israa Mouhsen Khalil Al-mulai	Adjunct Clinical Lecturer
24	Dr. Jancy Mannanthara Ali	Adjunct Clinical Lecturer
25	Dr. Josephine Jose	Adjunct Clinical Senior Lecturer
26	Dr. Kaherah Faeq Habeeb	Clinical Tutor
27	Dr. Kauthar Yahya Sulaiman	Adjunct Clinical Lecturer
28	Dr. Kinda Al-Ani	Adjunct Clinical Senior Lecturer
29	Dr. Kirtimalini Murlidhar Datar	Clinical Tutor
30	Dr. Laila Al Hubaishi	Adjunct Clinical Senior Lecturer
31	Dr. Lini Mary Daniel	Clinical Tutor
32	Dr. Litty Paulose	Clinical Tutor
33	Dr. Manal Mohd Wahba	Clinical Tutor
34	Dr. Maryam Khalid Jassim	Adjunct Clinical Senior Lecturer
35	Dr. Masuma Husain Abbasbhai Cherawala	Clinical Tutor
36	Dr. Mohammad S.Shaker	Adjunct Clinical Associate Professor
37	Dr. Nabilah A.K.M. Ali Mashhrawi	Adjunct Clinical Associate Professor
38	Dr. Nahla Ismail I. Al Fardan	Adjunct Clinical Lecturer
39	Dr. Nawal Hubaishi	Adjunct Clinical Associate Professor
40	Dr. Neha Anis Uddin	Clinical Tutor
41	Dr. Nighat Aftab	Adjunct Clinical Associate Professor
42	Dr. Nighat Fatima	Clinical Tutor
43	Dr. Omya Abdelkarim	Adjunct Clinical Associate Professor
44	Dr. Parveen Bhanu Mohammed	Clinical Tutor
45	Dr. Raghun&ini Koratkar	Clinical Tutor
46	Dr. Raja Haqqi	Adjunct Clinical Associate Professor
47	Dr. Rasha Mohamed Abdeldayem	Clinical Tutor
48	Dr. Razan Ali	Clinical Tutor
49	Dr. Razan Hatahet	Adjunct Clinical Senior Lecturer
50	Dr. Saba Yehya AlSayari	Adjunct Clinical Senior Lecturer
51	Dr. Saima Faraz	Clinical Tutor
52	Dr. Salma Ahmed Mohd	Clinical Tutor
53	Dr. Salma Al Mahdi	Adjunct Clinical Lecturer
54	Dr. Sara Abdul Kareem	Adjunct Clinical Senior Lecturer
55	Dr. Sara Abdulhadi Mussa	Clinical Tutor

56	Dr. Sara Walid Zahmak	Clinical Tutor
57	Dr. Seema Waheed	Clinical Tutor
58	Dr. Shabnam Saquib	Adjunct Clinical Assistant Professor
59	Dr. Shaima Al Suwaidi	Clinical Tutor
60	Dr. Shalini Dolly Fern&es	Clinical Tutor
61	Dr. Shameem Mir	Adjunct Clinical Lecturer
62	Dr. Shazia Naqvi	Clinical Tutor
63	Dr. Shiney Oliver	Clinical Tutor
64	Dr. Taghrid Faeq	Clinical Tutor
65	Dr. Tazeen Makhdoom	Adjunct Clinical Lecturer
66	Dr. Uma Pothiraj Vasanth	Clinical Tutor
67	Dr. Vandana Menon	Clinical Tutor
68	Dr. Vidya Raman	Clinical Tutor
69	Dr. Zenab Yusuf A. Lakdawala Tambawala	Clinical Tutor
70	Dr. Zoiya Fatima	Clinical Tutor
71	Dr. Zuhdi Khalid Nagshab&i	Adjunct Clinical Senior Lecturer
72	Dr. Zukaa AlMahloul	Clinical Tutor

ACADEMIC DEPARTMENT OF SURGERY

Sn No.	Name	Post / Title
1	Prof. Yousif El Tayeb	Adjunct Clinical Professor & Vise Dean of Clinical Affairs
2	Dr. Abdulhakim Hassan Basbous	Adjunct Clinical Lecturer
3	Dr. Abdulla Mohammed Qassim	Adjunct Clinical Senior Lecturer
4	Dr. Adnan M. AlHaj	Adjunct Clinical Lecturer
5	Dr. Ali Abdulla Ali Khammas Yammahi	Adjunct Clinical Senior Lecturer
6	Dr. Ali Mohammed Hussein Salem	Adjunct Clinical Senior Lecturer
7	Dr. Aliya Ishaq	Adjunct Clinical Lecturer
8	Dr. Amna Mohamed Belhoul	Adjunct Clinical Lecturer
9	Dr. Arfan Al Awa	Adjunct Clinical Lecturer
10	Dr. Basim Ra'ad Al Khafaji	Adjunct Clinical Associate Professor
11	Dr. Bassam Kamal Jabbour	Adjunct Clinical Lecturer
12	Dr. Bassem Mohamoud Hussein	Adjunct Clinical Lecturer
13	Dr. Behrooz Hossein Vazirian	Adjunct Clinical Lecturer
14	Dr. Deena Mohd AlQedrah	Adjunct Clinical Senior Lecturer
15	Dr. Esaaf Hasan Ghazi Mohd	Adjunct Clinical Associate Professor
16	Dr. Fariborz Bagheri	Adjunct Clinical Lecturer
17	Dr. Fawzy Abdusslam Benomran	Adjunct Clinical Professor
18	Dr. Fawzy Hamdy	Adjunct Clinical Associate Professor
19	Dr. Firas Jafar Kareem Annajjar	Adjunct Clinical Associate Professor
20	Dr. Haider Mahdi Sahib	Adjunct Clinical Lecturer
21	Dr. Hana Kamal Hamzah Almadani	Adjunct Clinical Senior Lecturer
22	Dr. Hani Fouad Sakla	Adjunct Clinical Associate Professor
23	Dr. Hany Fawzi W. Greiss	Adjunct Clinical Associate Professor
24	Dr. Hassan Yousuf Hotait	Adjunct Clinical Senior Lecturer
25	Dr. Hayder Abdul Hadi Al Saadi	Adjunct Clinical Lecturer
26	Dr. Hossameldin Wagdi Eid	Adjunct Clinical Senior Lecturer
27	Dr. Husni Sidiq Shalak	Adjunct Clinical Lecturer
28	Dr. Hussain Talib S. Salman	Adjunct Clinical Lecturer
29	Dr. Jamal M. Eid Kassouma	Adjunct Clinical Associate Professor

30	Dr. Kamal Moustafa Abdulla	Adjunct Clinical Lecturer
31	Dr. Khaled Ghandour	Adjunct Clinical Associate Professor
32	Dr. Labib Sallam D. Al O-Zaibi	Adjunct Clinical Professor
33	Dr. Lizica Itu	Adjunct Clinical Lecturer
34	Dr. Maher Younes Alobeid	Adjunct Clinical Lecturer
35	Dr. Masoud Shafiei	Adjunct Clinical Lecturer
36	Dr. Moaza Hashim AlBedwawi	Adjunct Clinical Lecturer
37	Dr. Mohamed Haneefa Shaji	Adjunct Clinical Lecturer
38	Dr. Mohammad Abdullah Taher	Adjunct Clinical Lecturer
39	Dr. Mohammad Javad Ahmad	Adjunct Clinical Lecturer
40	Dr. Mohammed Seddiq	Adjunct Clinical Professor
41	Dr. Mohsen Abdul Wahab Ibrahim	Clinical Tutor
42	Dr. Mouhannad Yasin Ghannam	Adjunct Clinical Lecturer
43	Dr. Mouza Adbulla AL Sharhan	Adjunct Clinical Senior Lecturer
44	Dr. Nadher M. Sherif	Adjunct Clinical Associate Professor
45	Dr. Navin Kumar Manickam	Adjunct Clinical Lecturer
46	Dr. Nazim Ahmed Alrifai	Adjunct Clinical Lecturer
47	Dr. Nooruddin K. Mosa	Adjunct Clinical Senior Lecturer
48	Dr. Obaid Mohd Aljassim	Adjunct Clinical Associate Professor
49	Dr. Osama Mohammed Al Zoabi	Adjunct Clinical Lecturer
50	Dr. Packirisamy Kannan	Adjunct Clinical Associate Professor
51	Dr. Rajesh Sadhu Ram Jesrani	Adjunct Clinical Professor
52	Dr. Rania Medhat Seliem	Adjunct Clinical Associate Professor
53	Dr. Roy Abraham Thayil	Adjunct Clinical Lecturer
54	Dr. Sabri Alnadhari	Adjunct Clinical Lecturer
55	Dr. Saeb Bayazid	Adjunct Clinical Senior Lecturer
56	Dr. Salah A. Qadir Al Arnaout	Adjunct Clinical Professor
57	Dr. Salam M.J. Hasan AL-Hasani	Adjunct Clinical Professor
58	Dr. Saleh Saad Kadhim	Adjunct Clinical Professor
59	Dr. Sameera Naureen	Adjunct Clinical Lecturer
60	Dr. Samir Mohamed AlAssar	Adjunct Clinical Senior Lecturer
61	Dr. Sara Nooruddin Kazim	Adjunct Clinical Lecturer
62	Dr. Sasi Kumar Gundapaneni	Adjunct Clinical Lecturer
63	Dr. Shaukat Hussian Minhas	Adjunct Clinical Lecturer
64	Dr. Shihab Ahmed M. Al _Sheikh	Adjunct Clinical Lecturer
65	Dr. Syed Abdul Muhaimin	Adjunct Clinical Lecturer
66	Dr. Syed Ashraf Hydros	Adjunct Clinical Lecturer
67	Dr. Talha abdefattah Saeid	Adjunct Clinical Lecturer
68	Dr. Tarek Abdul Aziz	Adjunct Clinical Senior Lecturer
69	Dr. Tarik A Al Janabi	Adjunct Clinical Professor
70	Dr. Wessam Hazim Issa	Adjunct Clinical Lecturer
71	Dr. Yaser Ahmad Saeedi	Adjunct Clinical Senior Lecturer
72	Dr. Yasir Amin A. Latif	Adjunct Clinical Associate Professor
73	Dr. Yolla Mallak Kasem	Adjunct Clinical Lecturer
74	Dr. Zafar Iqbal Gondal	Adjunct Clinical Associate Professor
75	Dr. Zaid A. G Al Mazem	Adjunct Clinical Senior Lecturer
76	Dr. Amna Khalifa Alhadari	Adjunct Clinical Assistant Professor
77	Dr. Manoj Pazhampallil Mathews	Adjunct Clinical Assistant Professor
78	Dr. Layla Mohamed Al - Marzouqi	Adjunct Clinical Assistant Professor

ACADEMIC DEPARTMENT OF PRIMARY HEALTH CARE

S.No	Name	Post/Title
1	Dr. Ahd Qassim Shahin	Adjunct Clinical Lecturer
2	Dr. Amna Mustafa ElAwad	Adjunct Clinical Lecturer
3	Dr. Ashraf Mohammad Swidan	Adjunct Clinical Associate Professor
4	Dr. Ayesha Mohammad Ali Abdulrahman Sultan AlOlama	Adjunct Clinical Lecturer
5	Dr. Fatma Mohammad Sultan AlOlama	Adjunct Clinical Senior Lecturer
6	Dr. Fatma Sayed Mahdi Ahmad	Adjunct Clinical Lecturer
7	Dr. Fawzia Ahmed Mohamed Abdouli	Adjunct Clinical Lecturer
8	Dr. Hala Azez Metry Sad	Adjunct Clinical Lecturer
9	Dr. Ilham Mohamad Elzobair	Adjunct Clinical Lecturer
10	Dr. Mohammad Morhaf Alwani	Adjunct Clinical Lecturer
11	Dr. Mohammad Naser Fargaly	Adjunct Clinical Associate Professor
12	Dr. Mohammed Gamil El Noamani	Adjunct Clinical Senior Lecturer
13	Dr. Moulham Saleh Ashtar	Adjunct Clinical Lecturer
14	Dr. Nabelyon Taha Faeq	Adjunct Clinical Senior Lecturer
15	Dr. Nahed AbdulKhaleq Monsef	Adjunct Clinical Senior Lecturer
16	Dr. Najla Mohammad Kazim	Adjunct Clinical Lecturer
17	Dr. Nargis Khatoon Hossein Mehdi Poor	Adjunct Clinical Senior Lecturer
18	Dr. Nehad Hassan Mahdy Abd El Magid	Adjunct Clinical Assistant Professor
19	Dr. Ola Saleam Awad Al Ayedi	Adjunct Clinical Lecturer
20	Dr. Sajitha Prasad	Adjunct Clinical Lecturer
21	Dr. Soha Abd El Aziz	Adjunct Clinical Lecturer
22	Dr. Suad Hashim Ahmed	Adjunct Clinical Lecturer
23	Dr. Wadeia Mohd. Al-Sharief	Adjunct Clinical Senior Lecturer
24	Dr. Zamzam Abdalla Mohamed Haji	Adjunct Clinical Senior Lecturer